

## The Fragments Collection Fall 2023: Available Works



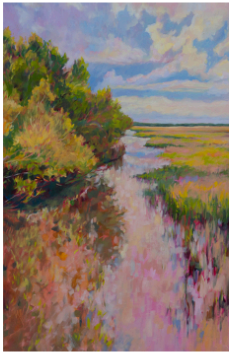
**There are so many stories, more beautiful than answers.**

Oil on canvas, 24 x 36 x 1.5 inches

\$1712

Title from Mary Oliver's *House of Light*.

Description: Cumberland Island marsh- vertical 1 blues version. Gallery wrapped canvas: Painted along the side edges, so framing is optional. Wired and ready to hang.



**This is the earnest work. Each of us is given only so many mornings to do it--to look around and love.**

Oil on canvas, 24 x 36 x 1.5 inches

\$1712

Title from Mary Oliver's *House of Light*.

Description: Cumberland Island marsh- vertical 2 pink version. Gallery wrapped canvas: Painted along the side edges, so framing is optional. Wired and ready to hang.



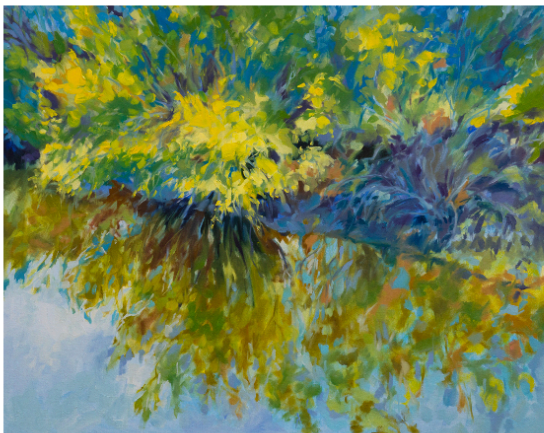
**Have you ever found something beautiful, and maybe just in time?**

Oil on canvas, gallery wrapped, 22 x 28 x 1.5 inches

\$1612

Title from Mary Oliver Poetry

Description: Evening clouds over the marsh. Periwinkle and sherbet sky Gallery wrapped canvas: Painted along the side edges, so framing is optional. Wired and ready to hang.



**Tossing a moment of light in every direction.**

Oil on canvas, 32 x 40 inches

\$1781

Title from "tossing a moment of light in every direction, like a chandelier, and then once more is still." Mary Oliver  
Description: Cumberland marsh reflections up close. Brush handling is loose with abstract gestural qualities. *\*This painting was created on un-stretched canvas and needs a frame.* I can frame it for you and ship it for free anywhere in the continental U.S. with the purchase of a simple float frame. Frame colors choices: black, gold, white, silver or natural wood. A 23x40 inch frame will be \$300



**I am in love with the ordinary things of life. Fresh air. Acts of kindness. Old soul conversations. Watching things grow.**

Oil on gallery wrapped canvas, 30 inches wide x 40 inches tall x 1.5 inches  
\$1812

Title inspired by a fragment of poetry by Ullie Kay.

Description: Vertical painting of marsh grasses and blue skies. Title inspired by: I am in love with the ordinary things of life. Fresh air. Acts of kindness. Old soul conversations. Watching things grow. ~ Ullie-Kaye From Ordinary things by Ullie Kaye

Sides reveal painted gallery wrapped canvas. Framing is optional. Wired and ready to hang.



**This poem is about loving the world and everything in it: the self, the perpetual muscle, the passage in and out, the bristling swing of the sea.**

Oil on cradled birch wood panel, 30 inches wide x 30 inches tall x 2.5 inches deep

\$1712

Title inspired by a fragment of Mary Oliver's poem called The Terns.

Description: Square painting with gentle reflections of sunset sky in the marsh. Buttery yellow, peach, sherbet and periwinkle with tawny greens. Sides reveal raw wood from the cradled panel. Framing is optional. Wired and ready to hang.



**The most powerful thing is not a storm. It is a ripple.**

Oil on cradled birch wood panel, 24 inches tall x 36 inches wide x 2.5 inches deep

\$1712

Title inspired by a fragment of Ullie-Kay's poetry. From the poem, "Ripple."

Description: Gentle horizontal view of the salt marsh at sunset. "The most powerful thing is not a storm. It is a ripple...It believes in the kind of strength that takes time. That holds steady. That looks for the small and the brave and the beautiful ways to love." From "Ripple" by Ullie-kaye



**She does not work slowly, nor quickly, but like a river.**

Oil on cradled birch wood panel, 36 x 36 x 2.5 inches

\$1912

Title inspired by a fragment of Mary Oliver poetry.

Description: Square painting with gentle reflections of sunset sky in the marsh. Pink, yellow, peach, sherbet and periwinkle with soft greens.

Sides reveal raw wood from the cradled panel. Framing is optional. Wired and ready to hang.



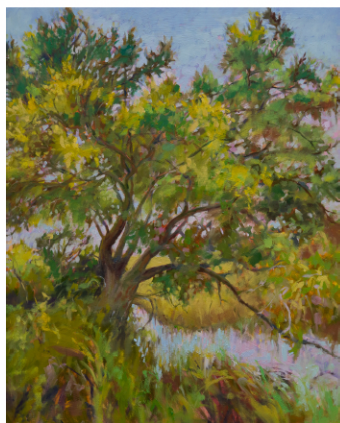
**All day I think of her. Her wordlessness. Her perfect love.**

Oil on cradled birch wood panel, 16 x 16 x 2 inches

\$695

Title from a Mary Oliver poem, *Spring*.

Description: Smaller square painting with gentle reflections of sunset sky in the marsh. Preparatory painting for "She does not work slowly, nor quickly, but like a river." Sides reveal raw wood from the cradled panel. Framing is optional. Wired and ready to hang.



**It was only a few moments past the sun's rising, which meant that the whole long sweet day lay before them.**

Oil on cradled birch wood panel, 24 x 30 x 2.5 inches

\$1712

Title from a Mary Oliver poem, *Some Herons*.

Description: Tree by the marsh. Confetti brush strokes with light pinks and teals reflected in the water and a calm clear sky. Sides reveal raw wood from the cradled panel. Framing is optional. Wired and ready to hang.



**Still, what I want in my life is to be willing to be dazzled.**

Oil on cradled birch wood panel, 24 x 30 x 1.5 inches

\$1712

Description: Title from Mary Oliver's poem, *The Ponds*: Still, what I want in my life is to be willing to be dazzled--- to cast aside the weight of facts and maybe even to float a little above this difficult world. Sides reveal raw wood from the cradled panel. Framing is optional. Wired and ready to hang.



**The Untrimmable light of the world, the ocean's shine, the prayers that are made out of grass.**

Oil on canvas, 32 x 36 inches

\$1782.00\*

Description: Summer storm moving over the marsh. Title taken from: "Oh good scholar, I say to myself, how can you help but grow wise with such teachings as these—the untrimmable light of the world, the ocean's shine, the prayers that are made out of grass?" Mindful, Mary Oliver  
*\*This painting was created on un-stretched canvas and needs a frame.* I can frame it for you and ship it for free anywhere in the continental U.S. with the purchase of a simple float frame. Frame colors choices: black, gold, white, silver or natural wood. A frame for this size painting is \$300.



**From what I've tasted of desire. I hold with those who favor fire.**

Oil on canvas, 24 x 36 inches

\$1712\*

Description: Fall walk in the forest. Title from Robert Frost's poem Fire and Ice. *\*This painting was created on un-stretched canvas and needs a frame.* I can professionally frame it for you and ship it anywhere in the continental U.S. for \$300. This includes your choice of a simple float frame in black, gold, white, silver or natural wood.



**The path to heaven doesn't lie down in flat miles.**

Oil on canvas, 48 x 60 x 1.5 inches

\$2612.00

Title from Mary Oliver's line: "Of course! The path to heaven doesn't lie down in flat miles. It's in the imagination with which you perceive this world, and the gestures with which you honor it."

Description: View of the Blue Ridge from the Mountains to Sea trail. This painting is on gallery wrapped canvas, featuring painted sides. Framing is optional. Wired and ready to hang.



**I want to believe that the imperfections are nothing—that the light is everything...and I do.**

Oil on cradled birch wood panel, 24 inches wide x 36 inches tall x 2.5 inches deep

\$1712

Title inspired by Mary Oliver's poem, "The Ponds."

Description: Vertical marsh painting with gentle reflections of sunset sky in the marsh. Pink, yellow, peach, sherbet and periwinkle with tawny greens. Sides reveal raw wood from the cradled panel. Framing is optional. Wired and ready to hang.



**Nobody knows what the soul is. It comes and goes like the wind over the water**

Oil on gallery wrapped canvas, 48 inches wide x 18 inches tall x 1.5 inches deep

\$1712

Title inspired by a fragment of Mary Oliver's poem "Maybe"

Description: Long skinny marsh painting with blues and greens. Sides reveal painted gallery wrapped canvas. Framing is optional. Wired and ready to hang.